



# **LINDELL**

## **STORAGE SOLUTIONS**

**ENGINEERING - MANUFACTURING - INSTALLATIONS - SERVICE**

**LOCATION: 5/22 LANCASTER STREET  
INGLEBURN NSW 2565  
AUSTRALIA**

**PHONE: 02 8234 8855  
EMAIL: [SALES@LINDELL.COM.AU](mailto:SALES@LINDELL.COM.AU)**

**8 YEARS WARRANTY**

**LIFETIME SERVICE**



A Division of Newmont Industries

**LINDELL**  
**STORAGE SOLUTIONS**

## **WAREHOUSE STORAGE SYSTEM**

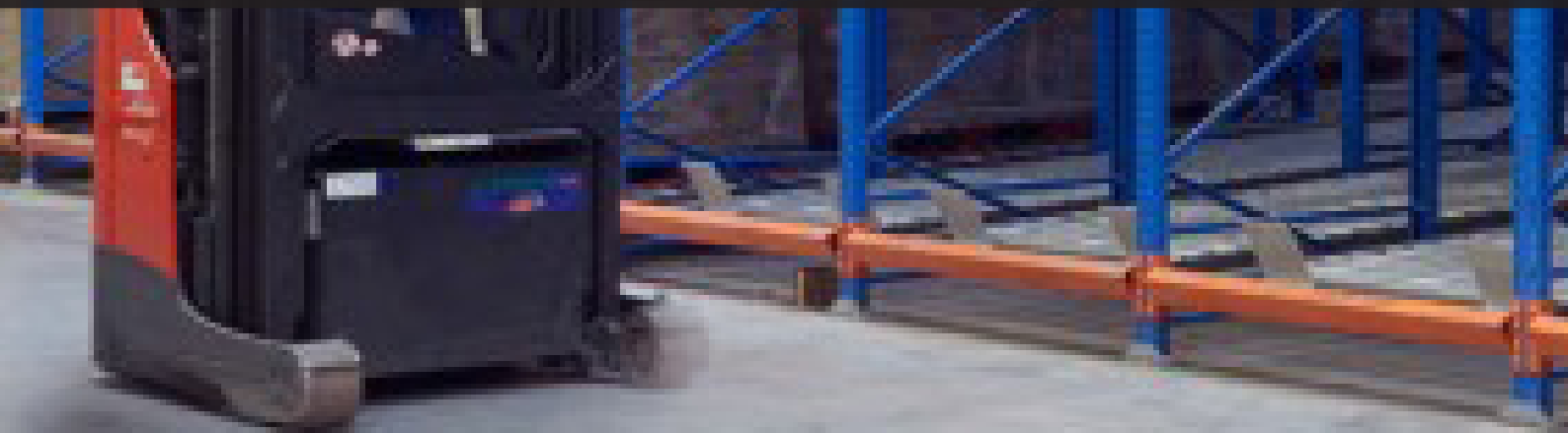
### **Total Storage Solutions**







“Total Storage Solutions to cover every Storage Needs.



## LINDELL STORAGE SOLUTIONS

### Table of Contents

Lindell Upright System	5
Lindell Beam System	6
Selective Racking	7
Cantilever Racking	9
Driving in Racking	11
Carton Live Racking	13
Push Back Racking	15
Cable & Coil Racking	16
Mezzanine Floor	17
Long Span Shelving	19
Accessories	20

### Always a solution for your specific needs

Manufacturing Industrial Rackings has long been Lindell's key areas of expertise. Thanks to our years of experience we can provide you with effective advice and a solution that makes your industrial storage more efficient and cost effective.

Our Industrial Racking is available in a wide range of options, to suit the storage of any long goods, whatever the size or weight of the products. Our system can be altered to fit the height and length of your warehouse and make the most of the storage space available. For unusual applications, fully customized solutions can be provided.

Lindell Racking System are fully complied with Australia Standard AS4084-2012, and covers with 8 years warranty and lifetime service. Our expert consultants will work with you to determine which storage options offer you the best added value and support you throughout every phase of the project. Even after the purchase, you remain in the very best hands.



AS 4084—2012  
Steel Storage Racks

sales@lindell.com.au  
www.lindell.com.au  
Tel: 02 8234 8855

Lindell also provide engineering service for custom solutions for the very special storage needs. We offer engineering in-house, and prototype testing, and fabricate the final products for installations.

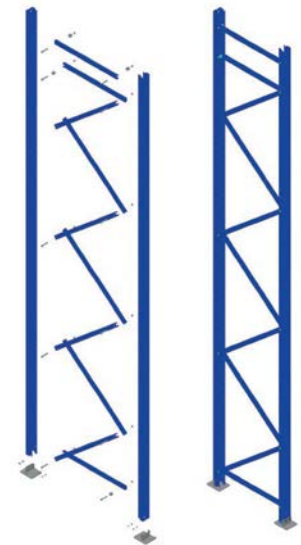
Lindell works several finance providers to offer finance options for our products, to avoid once-off capital purchases rather spreading the cost out over a specified timeframe.

## LINDELL UPRIGHT SYSTEM

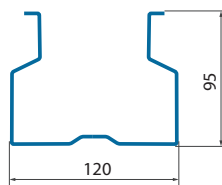
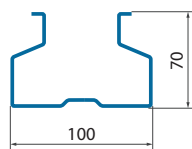
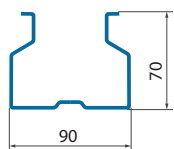
### BRIEF INTRODUCTION

Lindell Racking Upright System are made for custom height to suit the warehouse clearance. The upright has various sizes and subject to various steel thickness to meet the loading capacity requirement. Lindell upright frame capacity can go up to as high as 27,000KG per bay.

Lindell bolted upright frame consist of two uprights, horizontal and diagonal bracings, with bolted on or welded footplates and anchored to the concrete floor. It is available in color or zinc galvanzied finish.

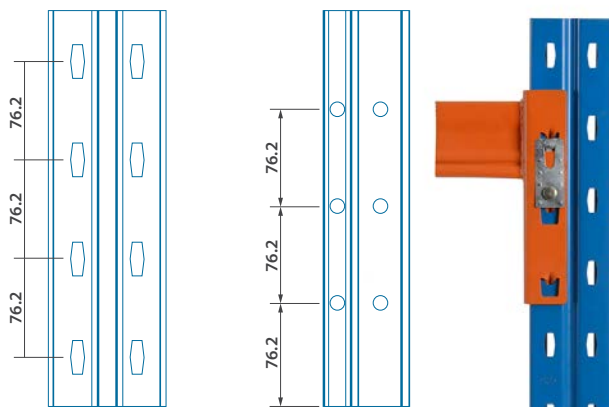


### UPRIGHT SIZES

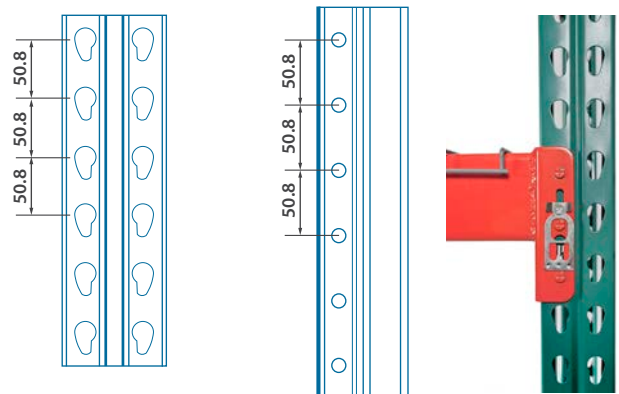


### UPRIGHT SYSTEM

#### Lindell Interlock Upright System



#### Lindell Teardrop Upright System



# LINDELL BEAM SYSTEM

Lindell Beam System comprises three types of beam,

## Interlock Beams

Two 'C' sections interlocked over the length of the beam, forming a double layers at the top and bottom of the beam, while the ribs give the beam additional stiffness.

## Steel RHS Beams

RHS beams are to be hot dip galvanised for outdoor use, while interlock beams are not suitable for galvanizing.

## Step Beams

Extruded stepped beam section allows to fit with wood board, mesh shelving and steel panel shelving.



Lindell Interlock Connector



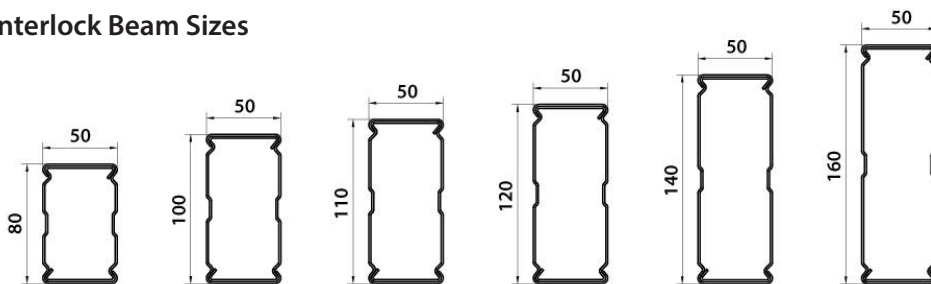
Lindell Teardrop Connector



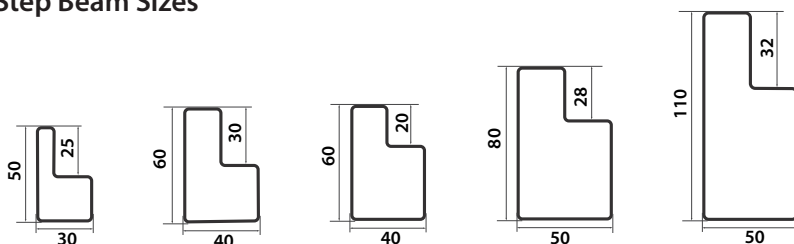
## CONNECTOR TYPES

## BEAM SIZES

### Interlock Beam Sizes



### Step Beam Sizes





## SELECTIVE RACKING



Selective racking are the most versatile and popular system for direct access to each and every pallet. It provides the ideal solution for warehouses with palletised products and a wide variety of product types and mixed rotation.

The height of the racking and the aisle measurements are tailored to suit the characteristics of the lifting devices, It provide easy access to all pallets, high capacity storage within low cost budget.

### Key Features:

- Low costing storage solutions
- Direct access for all pallets, speed of operation
- Good stock rotation
- Accessories can be added for unique loading requirement
- Easy to adjust and convenient for relocation

Selective Racking also can be configured to Narrow Aisle and Double Deep Racking System, and special forklift equipment are required.





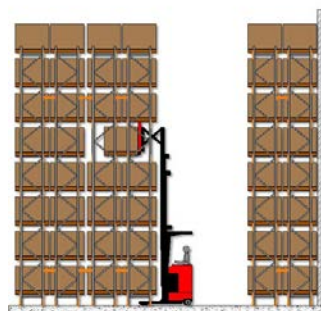
## SELECTIVE RACKING



**Selective Pallet Rack**

### Selective Racking

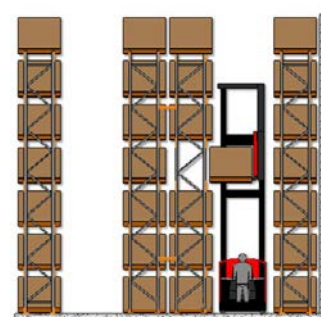
The most universal system for direct and single access to each pallet. The optimal solutions for those warehouses with palletized products and a wide variety of SKUs. Aisle widths range from 2700mm upwards. Selective can be operated with most common counterbalance forklifts.



**Double Deep Pallet Rack**

### Double Deep Racking

Double-Deep Racking is the most cost-effective solution for high floor area utilization in facilities that have large quantities of the same SKU. Aisle widths range from 3000-3500mm. It can increase storage capacity by 17% over a selective racking configuration. It is an efficient design that increases storage density at a relatively low capital cost. This system requires suitable lifting machinery fitted with double-depth telescopic forks.



**Narrow Aisle Rack**

### Very Narrow Aisle Racking

Ideal for large warehouses that require fast pick rates and easy access to a large number of different product SKU's. Aisle widths range from 1500-2300mm. This highly efficient floor space solution requires turret truck and a wire or rail guidance system. It increase space utilization by as much as 30% over conventional Selective Racking



## CANTILEVER RACKING



Cantilever racking systems provides an excellent solution to store irregular or oversized items. It is the perfect racking system for loading and retrieving long heavy items such as pipes, timbers, metals, and it is suitable for building material merchant, factory and warehouse.

We have ranges of light, medium and heavy duty cantilever system and able to provide custom solutions with various column height, arm length to meet loading requirement specifically for your particular application.

### Key Features:

- Cantilever racking is suitable for forklift and crane handling
- Choice of light, medium and heavy duty cantilever
- Single or double entry bases available
- Hot dip galvanized available for outdoor applications





## CANTILEVER RACKING



### Innovative, Safe and Flexible in Application

Lindell Cantilever System is innovative racking system that are adopted by various industry for each versatile and flexible application.

It is engineered to loading capacity, and also comprise all safety features for protection of personnel and products.

### Key Safety Features



The removable end stop to prevent items from rolling forward



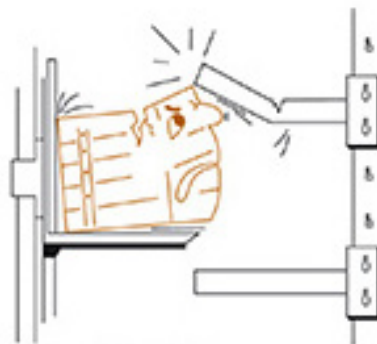
Bolts lock the beams in its position with safety clips



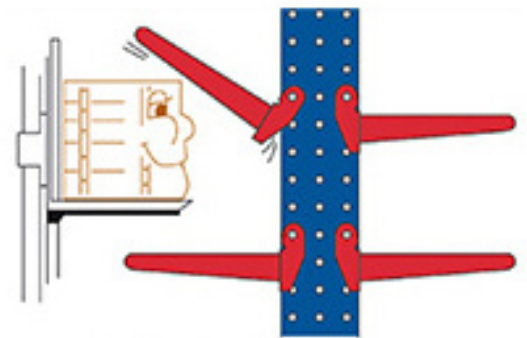
Bracings are connecting two columns for racking stability



Heavy constructed base with Dyna bolts into concrete floor



Fixed Arm



Articulated Arm

The cantilever articulated arms are designed to protect both the rack and product from unexpected forklift impact



## DRIVING IN RACKING



Drive-In system is designed for the storage of homogeneous products. It can accommodate a large number of pallets for each SKU.

Drive-In makes better use of the available surface and height space than any other. It removes the aisles between the racking, which enables the maximum use of available space in terms of both area and height.

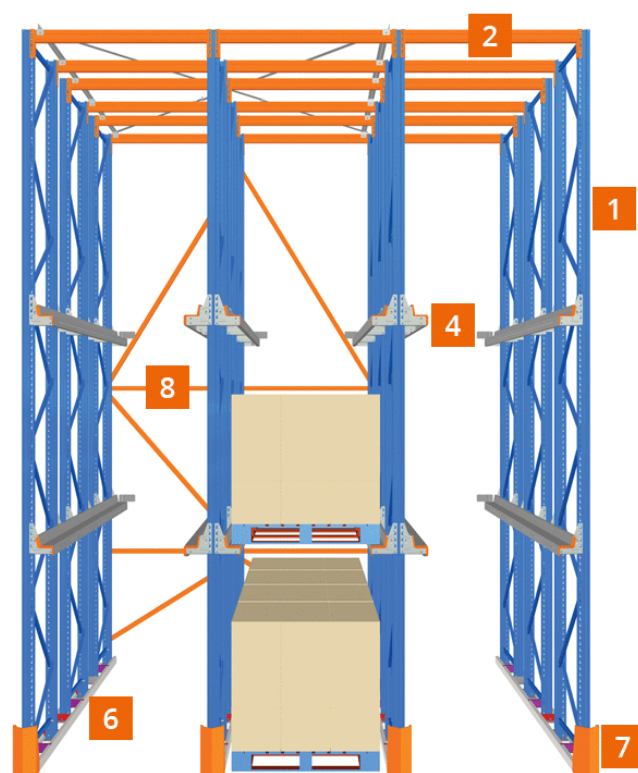
### Key Features

- First-in-last-out, or First-in-first-out configuration
- Maximize floor space for storage capacity
- Fast truck access for operation efficiency
- Ideal for storing homogeneous products
- Cost saving solution for quick stock rotation warehousing

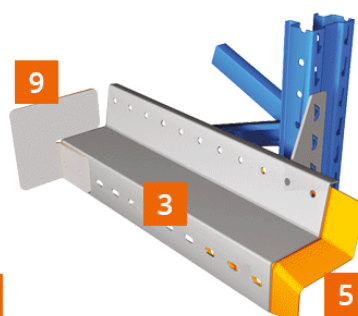




## DRIVING IN RACKING



1. The frame (upright)
2. The top-beam
3. The pallet rail
4. The support arm
5. The entry on the pallet rail
6. The ground guidance
7. The entry on the ground guidance
8. The back-bracing
9. The back-stop



## INCREASE YOUR STORAGE CAPACITY WITH DRIVE-IN RACKING

- Pallets are stored on pallet rails in the depth of the racking and forklift trucks enter these storage lanes to deposit or retrieve loads.
- Access can be from one end or from both ends for improved stock rotation, where replenish the rack on one side and retrieve goods on the other side of the rack.
- Drive-in and drive-through racks are replenished by counter balance trucks or reach trucks that can drive down the lanes.
- Lindell Drive In Racking System allows to racking heights up to 11 meters allow the full height and floor area of the building to be used to provide maximum cubic storage space.





## CARTON LIVE RACKING



Carton Live Racking incorporates roller track sections placed on a sloped rail to allow the pallets sliding. The pallets are placed at the highest part of the rolling section and move by the forces of gravity and at controlled speed towards the other end where they remain until ready to be removed.

Carton Live Racking is ideal for the following areas, where palletized loads are handled:

- Perishable goods warehouses.
- In Transit warehouse
- Packaging and order preparation sections
- Dispatching areas

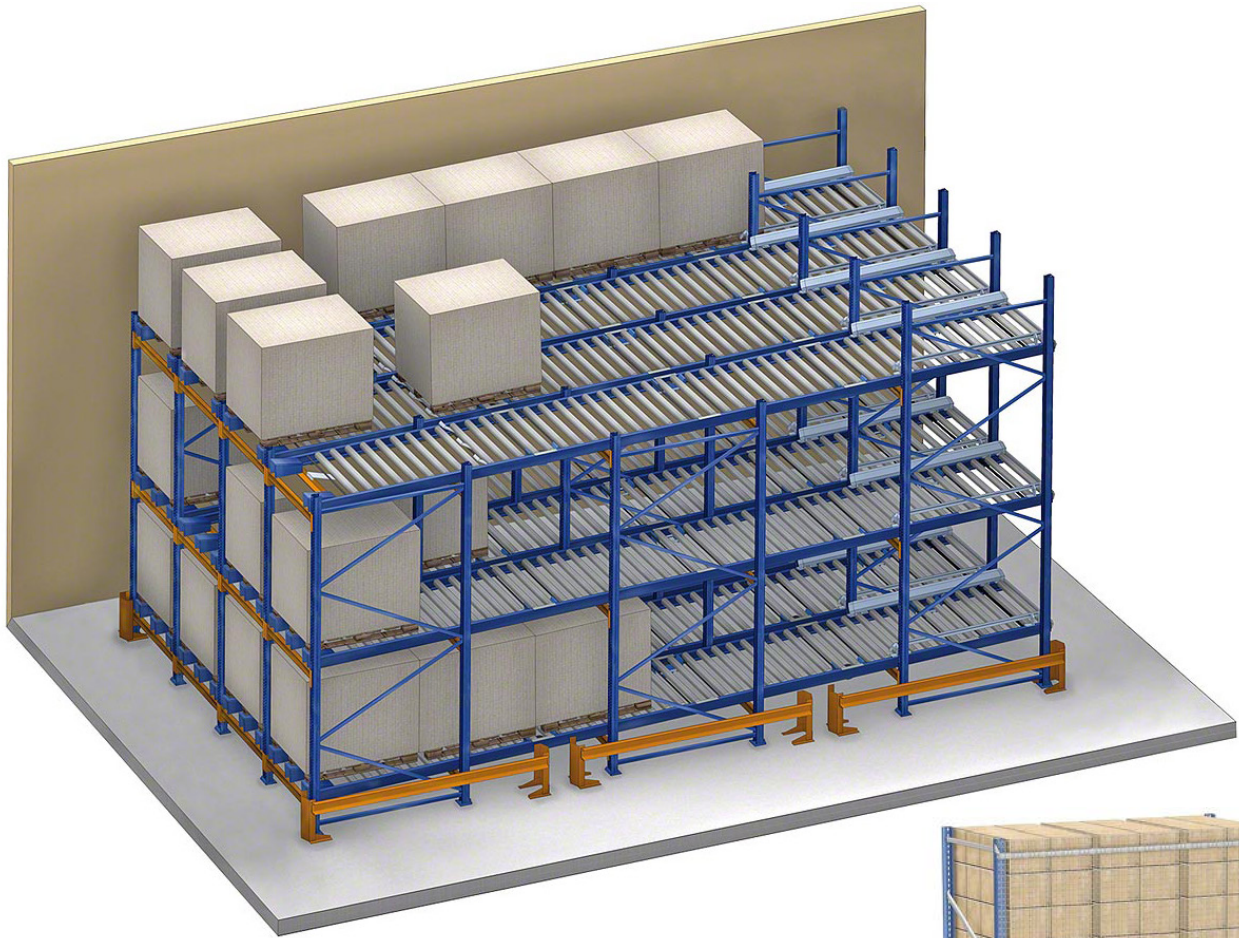
### Key Features

- First-in-first-out configuration
- The pallets are placed on a rolling section and moved by the forces of gravity
- Maximum capacity as this is a very compact storage system
- Choice of light, heavy duty or mobile system





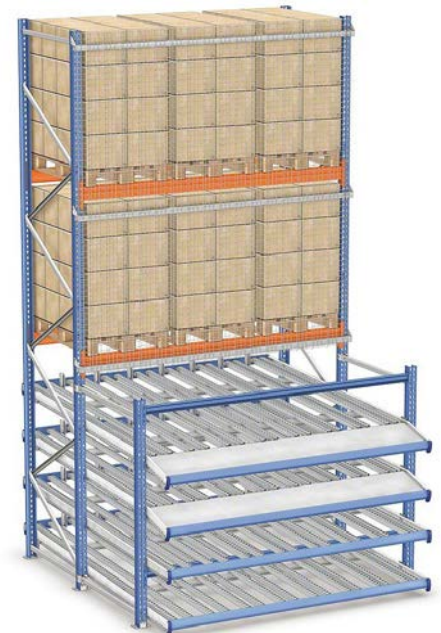
# CARTON LIVE RACKING



## PALLETS AND BOXES SMOOTHLY AND WITH MINIMAL EFFORT

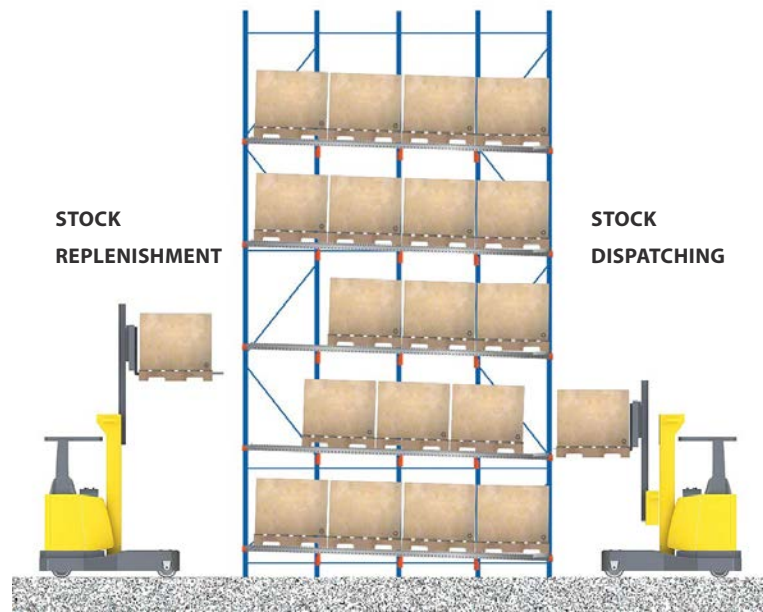
Carton Live Storage Racking are used for low volume case picking and for high volume split case picking.

Cartons are loaded individually at the back side of the rack system and flow to the front (FIFO). Carton Live Storage Racks can be installed as stand-alone units, or as a component of a larger pallet rack, or pick module application.





## PUSH BACK RACKING



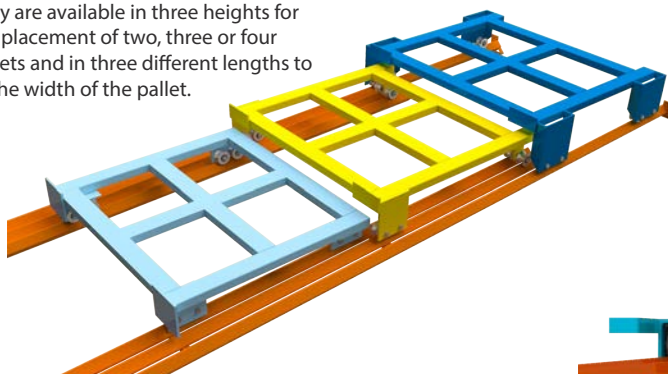
Push Back Racking provides high density storage that enables the storage of pallets up to four deep. Pallets are loaded in sequence onto wheeled carts along 3° angle inclined steel guide channels. When a pallet withdraws, the pallet behind automatically slides to the front position by force of gravity to utilize the full depth of the push back racking system.

### Key Features

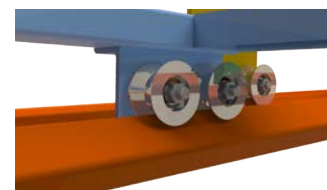
- Optimum turnover according to the FIFO or FILO principle
- Time saving when retrieving due to automatic movement of the pallets inside the rack
- Pallets loaded and picked from both side, or it can be achieved from single side
- Its easy installation and modification enables it to be adapted to the ever-changing needs of the business



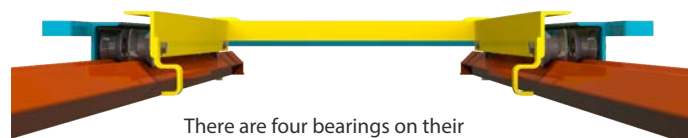
They are available in three heights for the placement of two, three or four pallets and in three different lengths to fit the width of the pallet.



Load capacity  
Each cart has load capacity  
up to 1,500KG



Industrial Steel Bearing



There are four bearings on their corresponding shafts to allow movement along the rail.

## CABLE & COIL RACKING



Lindell Cable & Coil Racking system allows the safe storage of materials that are held on reels or drums and allows the winding and decoiling of the reels to and from the coil racks. Our heavy duty coil racking installs with bearing for even easier rolling.

Coil racking can be single or double sided to save space and therefore configured in various layouts.

### Typical examples of materials stored on reels

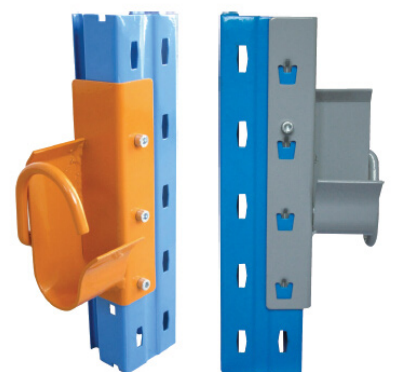
- Metal coil and cabling
- Paper and fibre products
- Rubber and plastic goods
- Carpets and other floor coverings



### Heavy Duty Coil Racking



### Light Duty Coil Racking





## MEZZANINE FLOOR



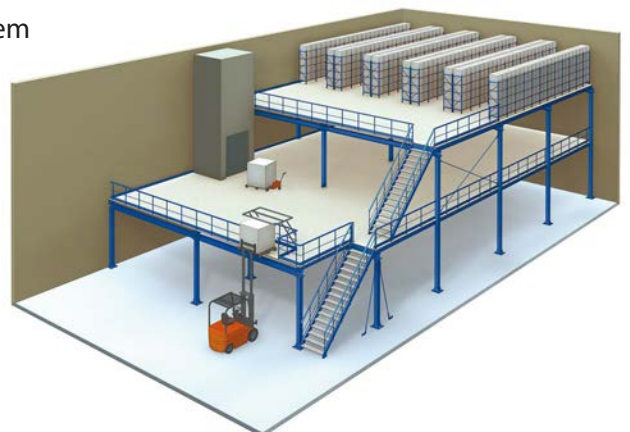
Mezzanine floors take the most advantage of the height of premises, doubling or tripling the surface area and enabling it to be fitted out as a storage area or offices.

Mezzanine floors are totally dismountable and re-usable, and their structure, dimensions and location are easily modified. It is the best way to solve space problems at a minimal cost.

We offer custom built Mezzanine Floor solution, in aspects of dimensions, storage characteristics, access requirement and floor loading capacity.

### Key Features

- Multiplies surface space in industrial premises
- Adaptable to the specific needs with great variety of sizes, types of floors, construction systems
- They can be complemented with a variety of shelving system
- Custom built to meet all requirements



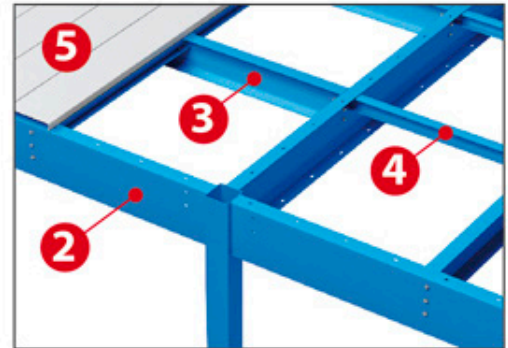


## MEZZANINE FLOOR



### Component Parts

- |               |                      |               |
|---------------|----------------------|---------------|
| 1) Columns    | 4) Sub Beams         | 7) Staircase  |
| 2) Main Beams | 5) Grating           | 8) Handrail   |
| 3) Beams      | 6) Column Base Plate | 9) Slide Door |



Lindell can design and manufacture raised storage area that combine all the shelving on each level with walkways and aisles.

This is a typical design for warehouse requires functionality for order picking, small parts distribution.

Operators can access each level through stairways, while the open areas are protected by railing that guarantees the safety of operators.

## RAISED STORAGE AREA





## LONG SPAN SHELVING



Longspan racking is a versatile and easily accessible system that is ideal for business where products are shelved, rather than stored on pallets, and employees need to be able to access the shelves on foot and order picking manually. There is a very broad range of size and weight configurations, it is extremely flexible, versatile and can be adapted and tailored to meet your specific requirements.

Longspan shelving system with a choice of timber, mesh or steel decking. Timber is perfect for dry goods, steel for liquids to wipe clean and mesh for ventilation and sprinkler access if required. Uprights can be supplied assembled

### Key Features

- Shelving quick and easy to assemble, no need special tools
- Shelves can be easily adjusted to your needs as stock changes
- Economic shelving solution with great flexibility
- Available in variety of sizes to suit your storing needs
- Custom made solution available





## ACCESSORIES



Pallet Support Bar



Row Spacer



Particle Board Support



Upright Protector



Upright Protector



Upright Footplate



Drum Rack



Rack Barrier



Rack Barrier



Splice Kit



Bay Divider



Mesh Deck



Metal Pallet



Trolleys



Work Bench



Stillage